



[Home](#)

[About](#)

[Portfolio](#)

[Design](#)

Drapery Styles & Design Guide

Tailored to your space

This portfolio is designed to help you explore drapery styles, fabrics, and functional options. Each design is customized to your window measurements, lifestyle, and aesthetic preferences.

www.DaymeryCreations.com

About Us

Daymery Creations is a family-owned studio located in Los Angeles, CA, specializing in bespoke soft furnishings and home textiles that combine timeless elegance with exceptional craftsmanship.



- **Drapery**
- **Tablecloths**
- **Cushion Covers**
- **& More**

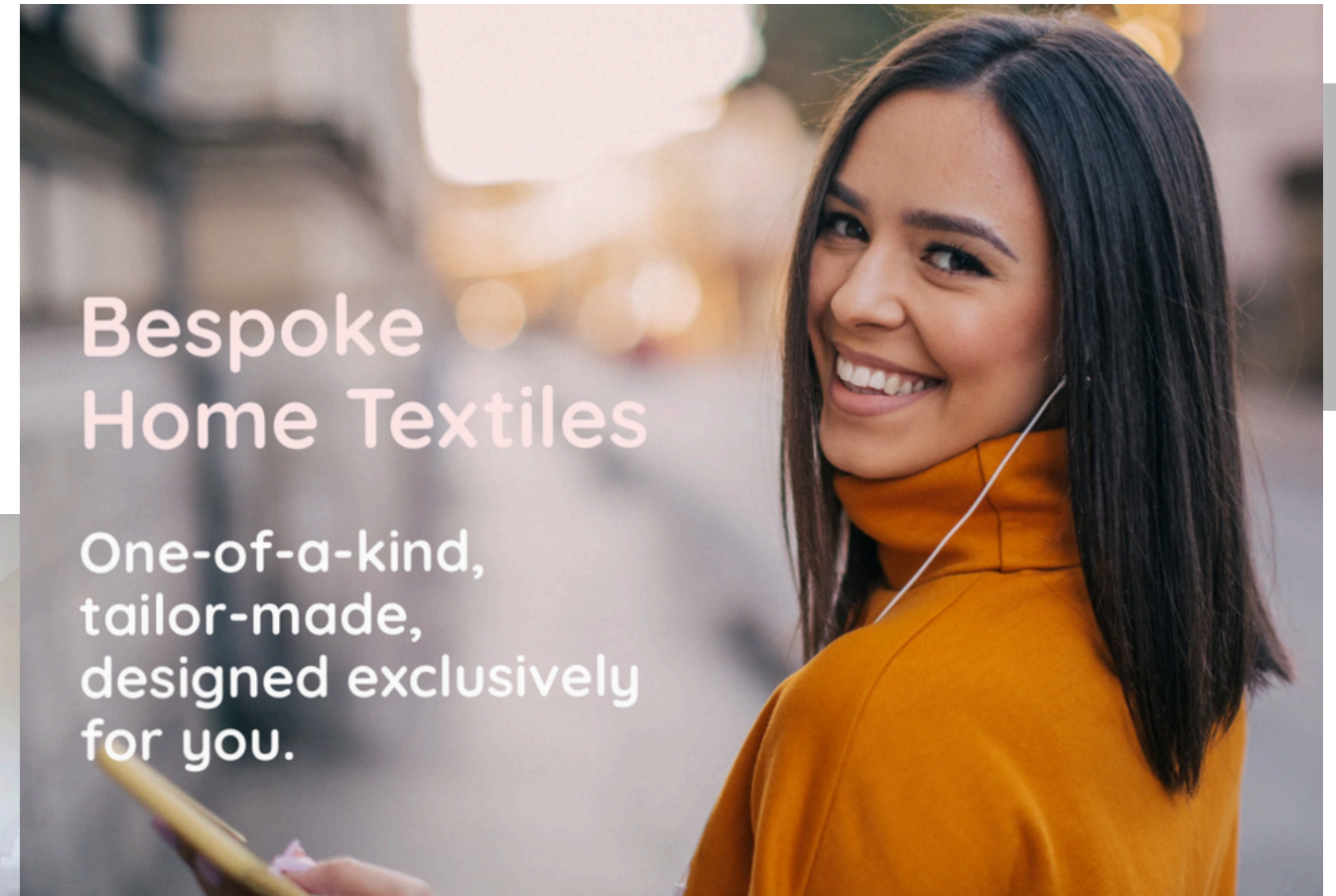


Bespoke vs. Custom Explanation

Bespoke means fully made from scratch, specifically tailored to the client's requirements and preferences.

One-of-a-kind. Designed exclusively. Created for you from the ground up.

Custom means the item is created for the client, but within an existing framework or style.



DAYMERY = BESPOKE DESIGN



How to Use This Portfolio

Step-by-step:

1. Drapery style
2. Explore fabric options & lining
3. Hardware overview
4. Measurements

ELEVATE YOUR EXPERIENCE

Images shown are for style inspiration. Final designs are customized specifically for your space.



Tab Top Drapery

Fabric loops create an informal, relaxed appearance. Often used in casual or coastal interiors.



Best for:

- Casual spaces
- Light-filled rooms

Style Notes:

Relaxed, airy, and informal



Tab Top Decorative Drapery

Fabric loops create an informal, relaxed appearance. Often used in casual interiors.

Best for:

- Casual spaces
- Light-filled rooms
- Decorative applications

Style Notes:

Relaxed, airy, and informal

Rod Pocket Drapery

Fabric slides directly onto the rod, creating soft gathers along the top. Best used as a decorative or light-use option.

Best for:

- Decorative windows
- Cottage or traditional spaces
- Stationary panels

Style Notes:

Soft, cozy, and classic



Front



Back Tab Curtains

A clean, tailored drapery style where fabric tabs are sewn onto the back of the panel, allowing the rod to slip through discreetly.



Back

Best for:

- Transitional, modern, or casual interiors
- Living rooms, bedrooms, and relaxed dining spaces
- Spaces seeking a polished look without visible hardware

Style Notes:

Relaxed, and effortlessly refined

Double Rod Curtain

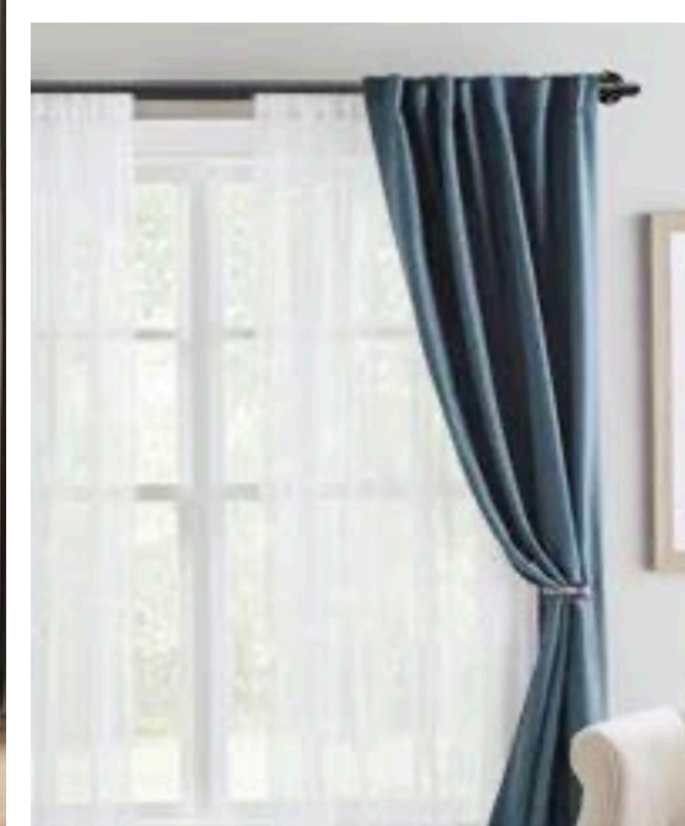
A versatile window treatment using two parallel rods to layer panels, typically a sheer for light control and privacy, paired with a decorative drapery for depth and style.

Best for:

- Living rooms, primary bedrooms, and dining areas
- Spaces requiring both privacy and natural light
- Interiors that benefit from layered, functional elegance

Style Notes:

Refined, adaptable, and visually balanced



Inverted Pleat Drapery

A tailored drapery style where pleats are formed at the top and folded toward the back, creating a clean, structured front appearance with subtle fullness.

Best for:

- Formal or transitional interiors
- Living rooms and dining rooms
- Stationary or functional panels

Style Notes:

Refined, tailored, and timeless



Double Pinch Pleat

Classic drapery style featuring two pinched folds at the top of each pleat, creating a fuller and more structured appearance with elegant, flowing drape.

Best for:

- Traditional or transitional interiors
- Living rooms, dining rooms, and primary bedrooms
- Spaces where a refined, tailored look is desired

Style Notes:

Elegant, structured, and timeless



Tempo Wave Drapery

A contemporary drapery style designed to create soft, consistent wave-like folds from top to bottom. This style offers a clean, streamlined look with smooth movement along a track system.



Best for:

- Modern or contemporary interiors
- Large windows or sliding doors
- Functional, easy-to-operate drapery

Style Notes:

Modern, fluid, and architectural

Traverse Rod Drapery

A functional drapery system designed with a corded or motorized track that allows panels to open and close smoothly with minimal effort. This style ensures consistent pleating and a clean, tailored stack when combining ease of use with a polished appearance.

Best for:

- Formal, transitional, or contemporary interiors
- Living rooms, primary bedrooms, and large windows or sliding doors
- Spaces where convenience, symmetry, and precise operation are desired

Style Notes:

Streamlined, practical, and refined



Linen



Cotton



Velvet



Sheer |Chiffon

FABRIC OPTIONS

Fabric choice plays a key role in the overall look and function of your drapery. Fabrics are provided by the client.

Common fabric options include:

- Linen
- Cotton
- Velvet
- Sheer & Lightweight
- Fabric blends

LINING & FUNCTIONALITY

- Unlined: Light and decorative
- Privacy lining: Soft light control and added privacy
- Blackout lining: Maximum light control, ideal for bedrooms



Unlined



Privacy lining



Blackout lining

HARDWARE OVERVIEW



Single Rod



Double Rod



Traverse Rod



Rod with Rings

About

Portfolio

Design

Contact

Contact Us

Once you've selected a style, we'll guide you through fabric selection, measurements, and customization.

Phone Number

661-483-0042

Social Media

@DaymeryCreations

Email Address

CGuardado@DaymeryCreations.com

Office Address

42004 Ash Ct. Quartz Hill, CA 93536

